

CARTON FLOW RACK Liquidation

Excess assets no longer required for the continuing operations of a major retailer's distribution center.

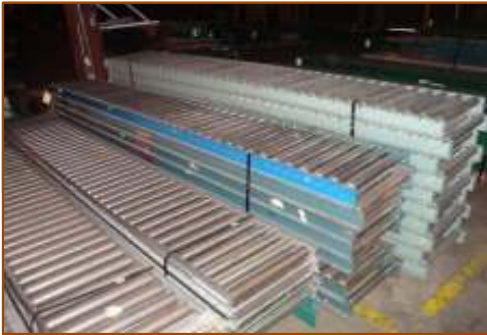
Stacked and ready to load from an ATLANTA, GEORGIA location -- or to ship FOB to your destination.

Contact JG Resources for details

Call SALES at (800) 823-2433 or (208) 392-9729 * Email Sales@JGResource.com

Sales Office Hours: Monday-Friday 9am-4pm.

QTY	Description
217	Kingway Layback Frame 96" tall 114" deep. Use with 10ft deep shelves (KW Blue)
153	Kingway Layback Frame, 134" tall x 69" deep @ base 46in deep at top. This is part of 2 piece assembly.
2099	Kingway Shelves 60" wide x 120" deep
155	Kingway Shelves 66" wide x 90" deep
57	Kingway Straight Frame 96" tall x 85" deep
10	Kingway Staight Frame 96" tall x 65" deep, use with 72" deep shelves
78	Kingway Reserve Frame 252" tall x 42" deep
79	Kingway Bolt-on beams 11" tall x 163" long, pick module main aisle support
60	Kingway Bolt-on Beams 4.5" tall x 92.5" long, 7.5" corner angle
105	Bolt-on beams 6" tall x 120" long (green)
406	Kingway HD Sway Brace 7" tall x 60"long, bolt-on (KW Blue)
56	Kingway J/bolt-on Beam 5" tall x 44.5" long, Pick Module reserve aisle support (KW Blue)
8	Kingway Layback Frames 134" Tall x 115" deep at the base and 467" deep at the top, use with 120" deep shelf
105	Kingway LD Brace 6.5" tall x 60" long, clip-on
136	Keystone Style Beams 4" tall x 120" long, 7" corner angle (orange)





PHONE (800) 823-2433 EMAIL Sales@JGResource.com
Subscribe to **EMAIL UPDATES** and view all our **ASSET LIQUIDATION PROJECTS** at www.JGResource.com



TERMS OF SALE: Payment for purchases must be made by Cash, Money Orders, Visa, MasterCard, American Express and Discover. A 10% Buyers Premium is added to all purchases.

CONDITIONS: Every item being sold "As Is-Where Is" without warranty or guarantee intended or implied of any kind, including merchant-ability or fitness for particular purposes. All sales final, no returns/refunds. Prices are subject to change at any time. The seller or its agents assumes no liability for accuracy, errors or omissions in this promotion. All items are subject to prior sale or deletion from the sale. Customer responsible for removal. Although most items are available, they may not be available for immediate pick-up or at all locations. REMOVAL REQUIREMENTS: Buyer responsible for removing fixtures & equipment purchased, capping electric/plumbing/drain lines, and certain other requirements upon removal.



KEEP IT GREEN: BUYING USED SAVES MONEY and helps SAVE THE PLANET
by recycling pre-owned fixtures back in to productive use.